

# Histoire de Shawinigan



# Orthographe du mot Shawinigan

Achauenekame, Achawénégan, Achawénégane, Achawénékame, Achawénékame,  
Achawénékane, Acheweonigam, Ashawenikam, Assaouinigane, Assa8nigane, Azawanigan,  
Azawinigan

Chabetsiouatagane, Chabonigan, Chabonigane, Chaouenigane, Chaouénigane, Chaouinigan,  
Chaouinigane, Chaournigam, Chawinigame, Chawinigan, Chawinigane, Cha8inigane,  
Cha8nigan, Cha8nigane

Oshaouinigane, Oshawenigane, Osha8négane

Shabonigame, Shabonigan, Shabonigane, ShawanaLegan, Shawanehagan, Shawenegan,  
Shawénégan, Shawenigane, Shawinigame, Shawinigane, Shawinnegamme, Shawonegan,  
Sha8negane, Sha8nigan, Shewenagan, Shewinigam

# Définition du mot Shawinigan

portage aux hêtres, portage fait en faîne,  
portage sur la crête, portage angulaire, portage  
en forme d'aiguille, portage du sud, portage  
anguleux, portage en pente

aiguille, chas d'aiguille, chute de l'aiguille,  
travail à l'aiguille

crête, côte qui change de bord, sommet de la  
côte





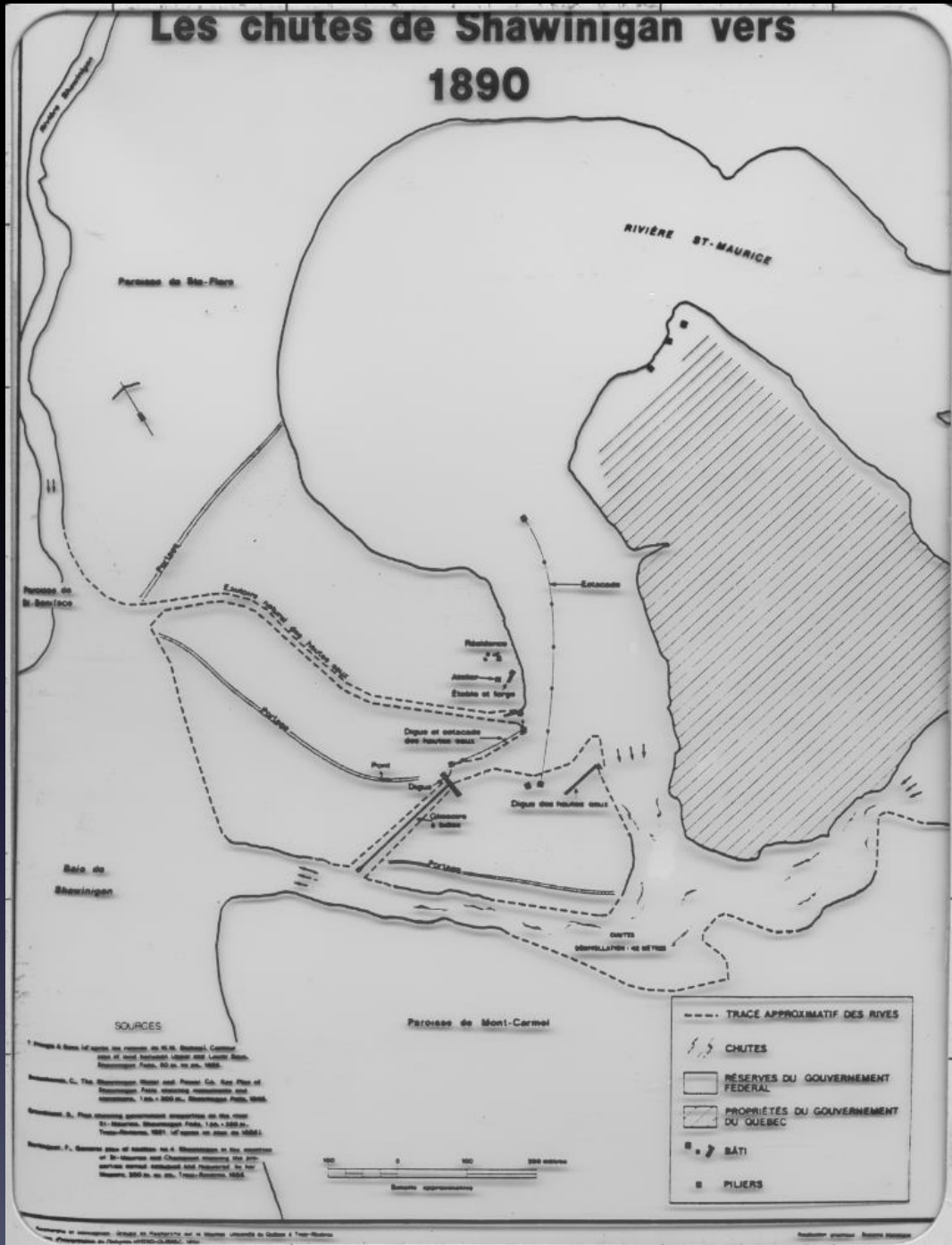








# Les chutes de Shawinigan vers 1890



**SOURCES**

1. Plan de St-Basile et de la paroisse de St-Maurice, Comté de St-Maurice, Québec, 1855. (Plan of St-Basile, St-Maurice County, 1855.)

2. The Shawinigan Water and Power Co. See Plan of Shawinigan Falls, including measurements and elevations, 1880 & 1881, Shawinigan Falls, 1881.

3. Plan showing approximate elevations on the river St-Maurice, Shawinigan Falls, 1880 & 1881. (Shawinigan Falls, 1880 & 1881.)

4. General view of location of Shawinigan Falls, including St-Maurice and Chaudière Rivers, in the vicinity of Shawinigan Falls, 1880 & 1881. (Shawinigan Falls, 1880 & 1881.)











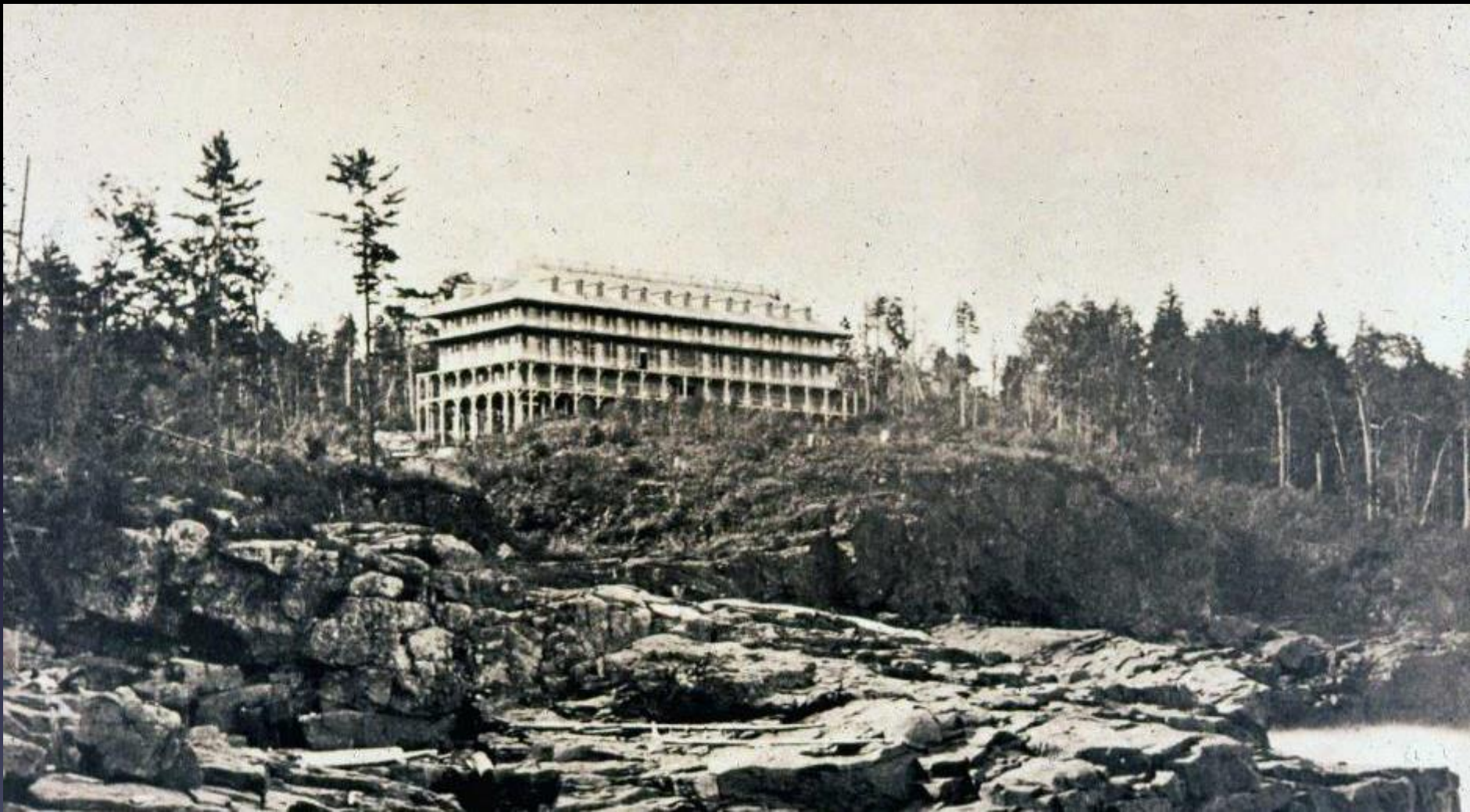








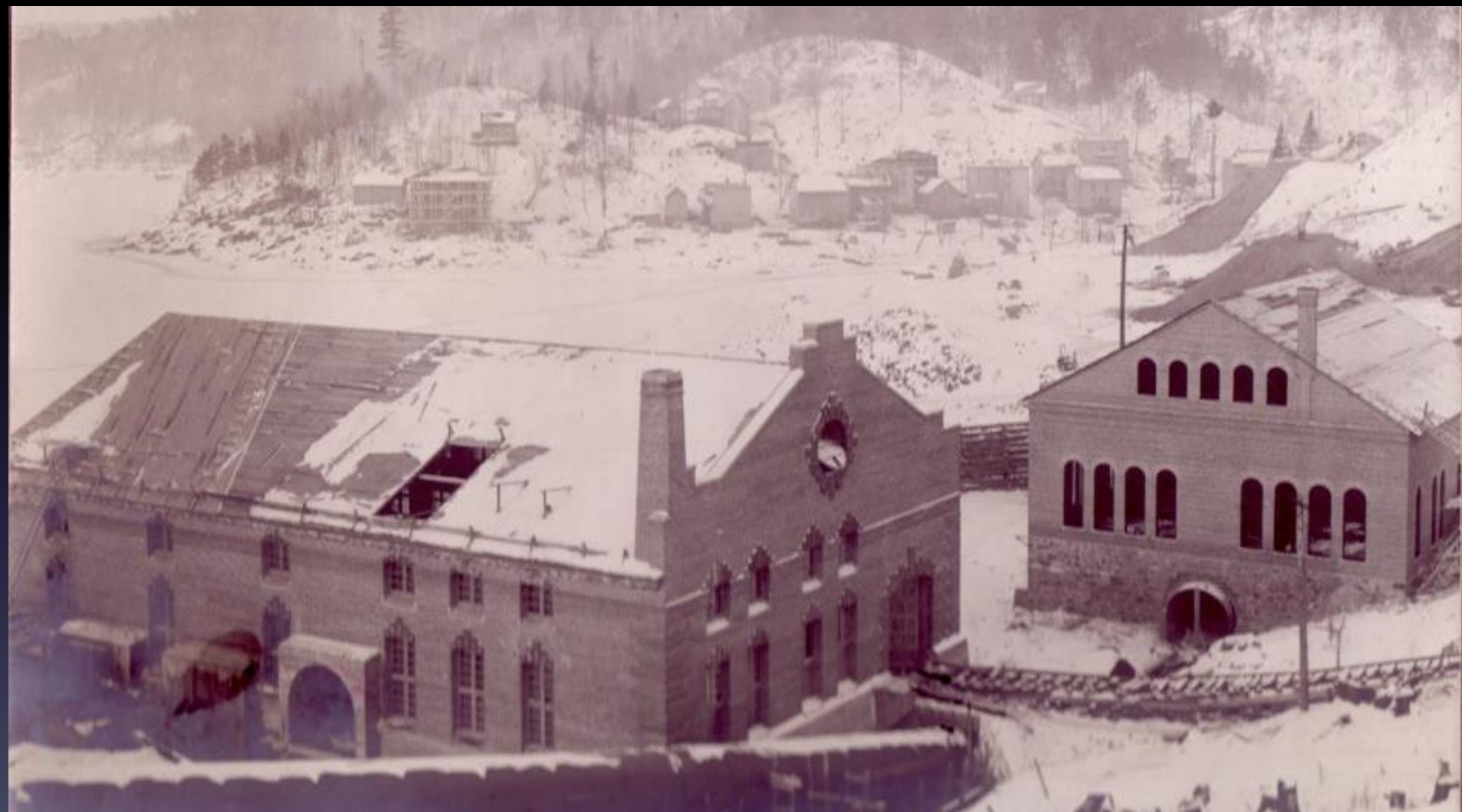






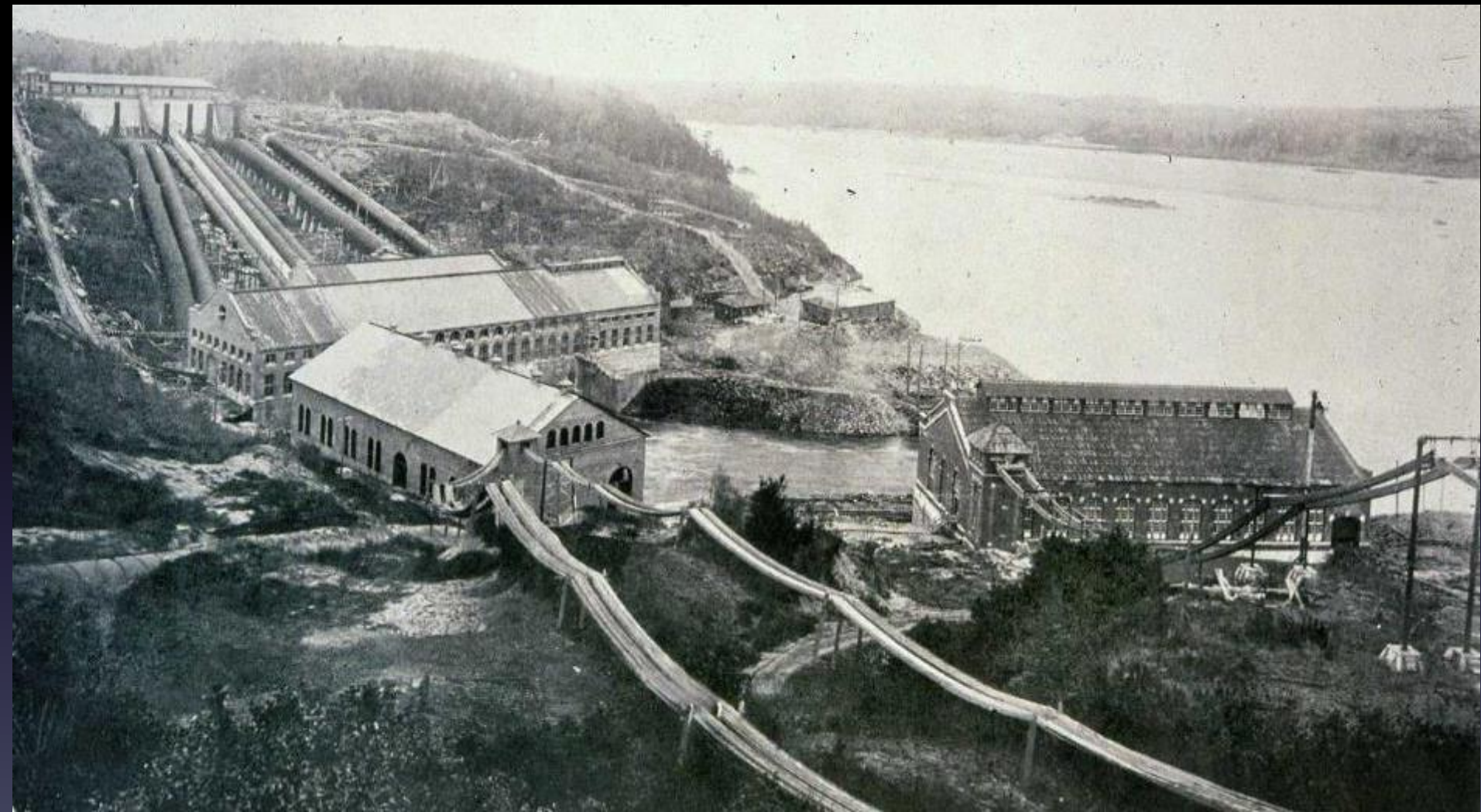


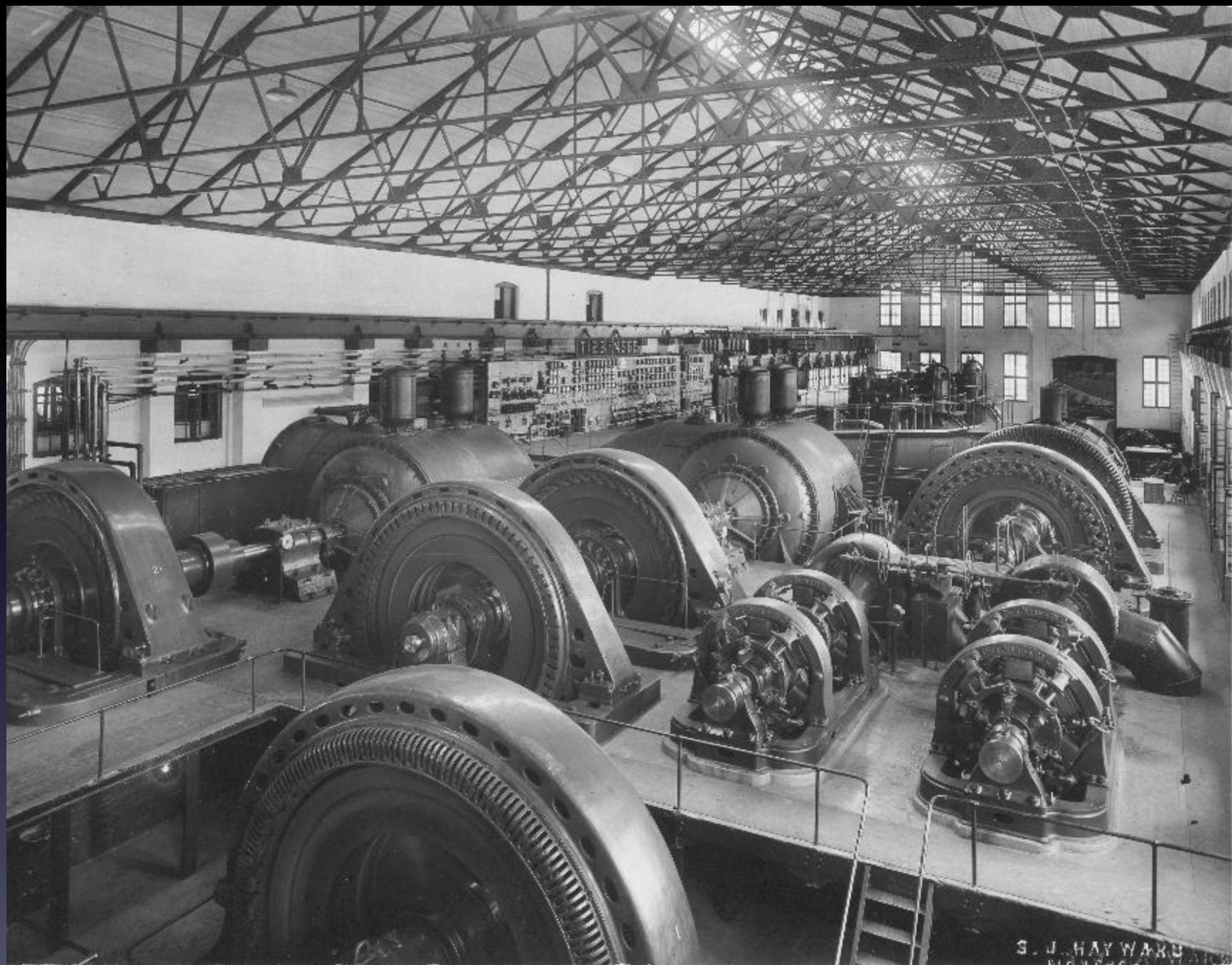










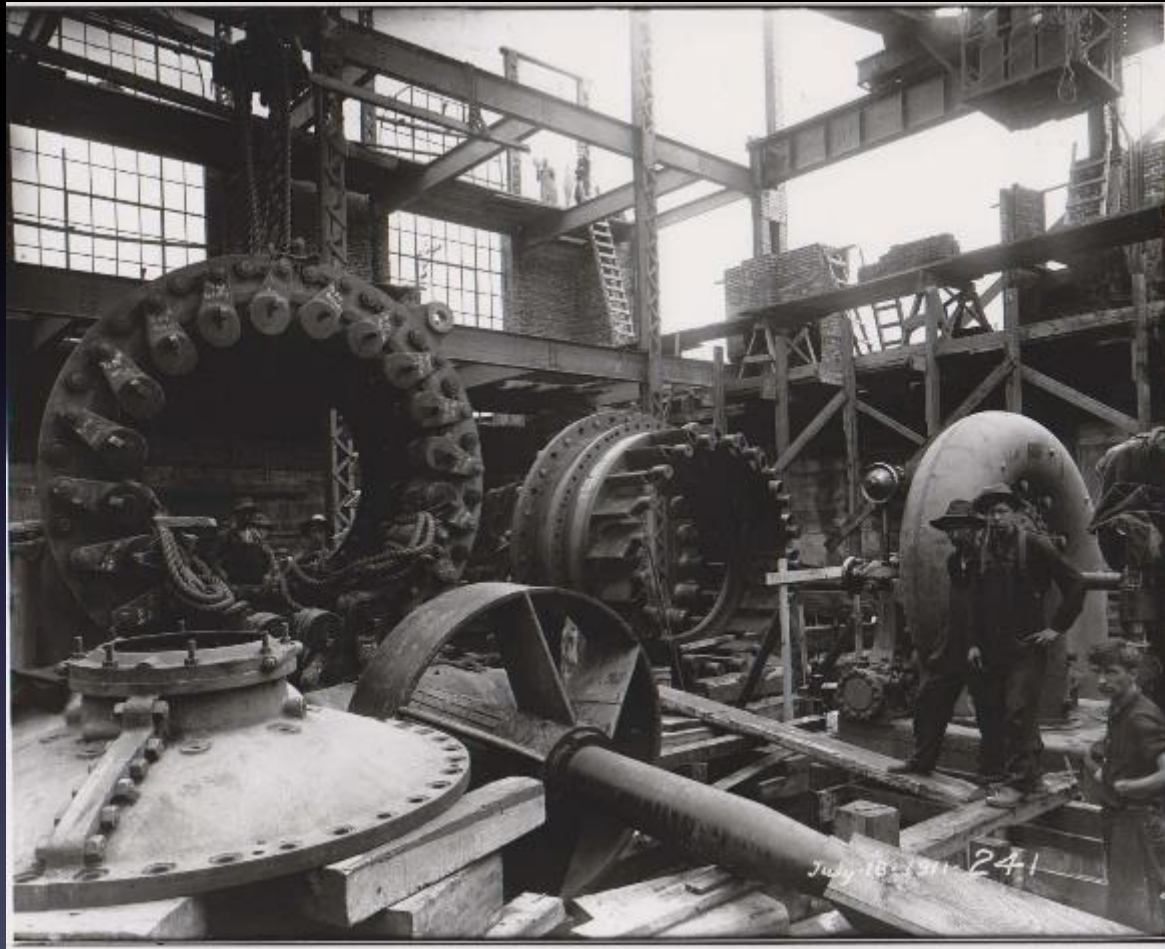


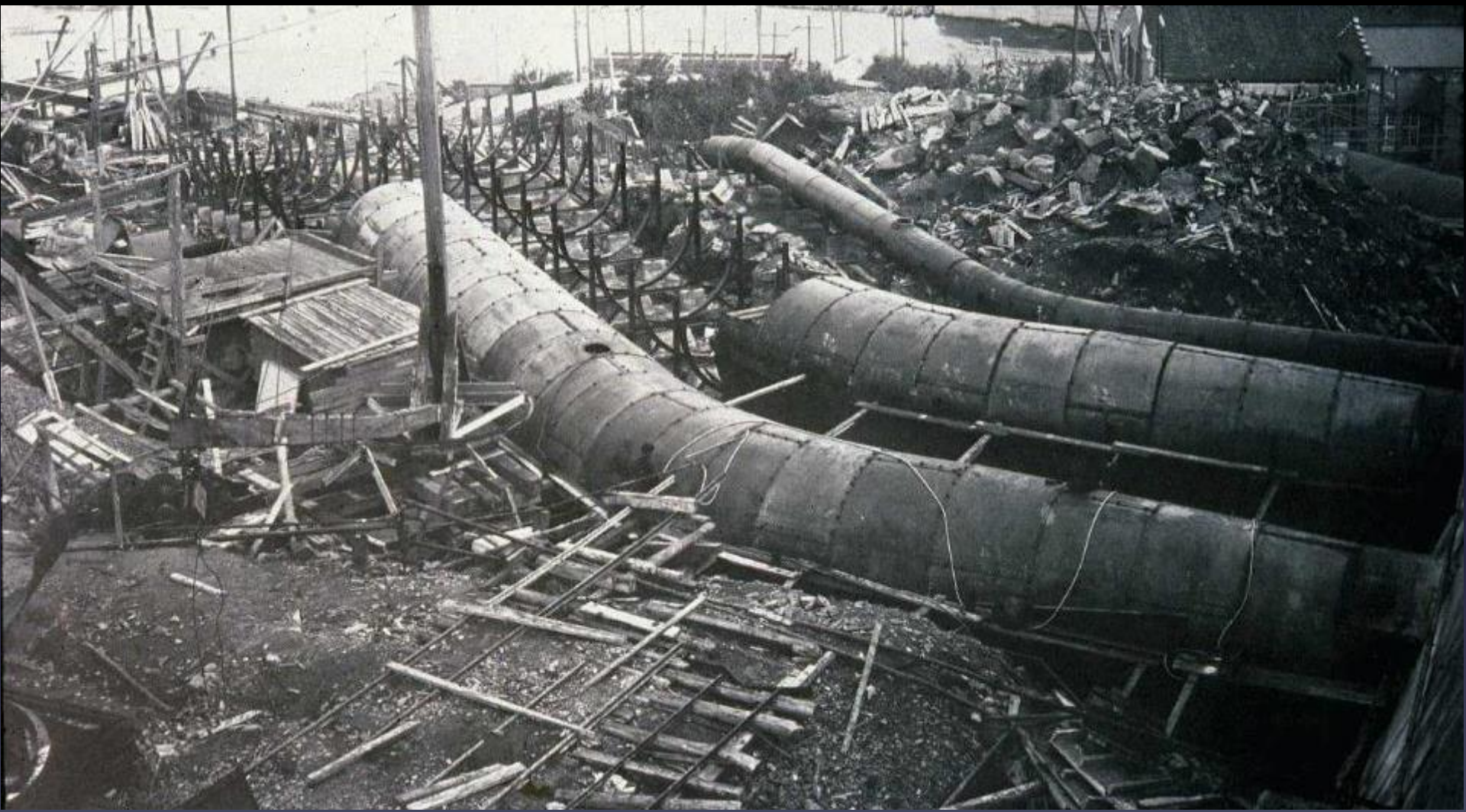
S. J. HAYWARD  
1910



Aug 24-1911-257





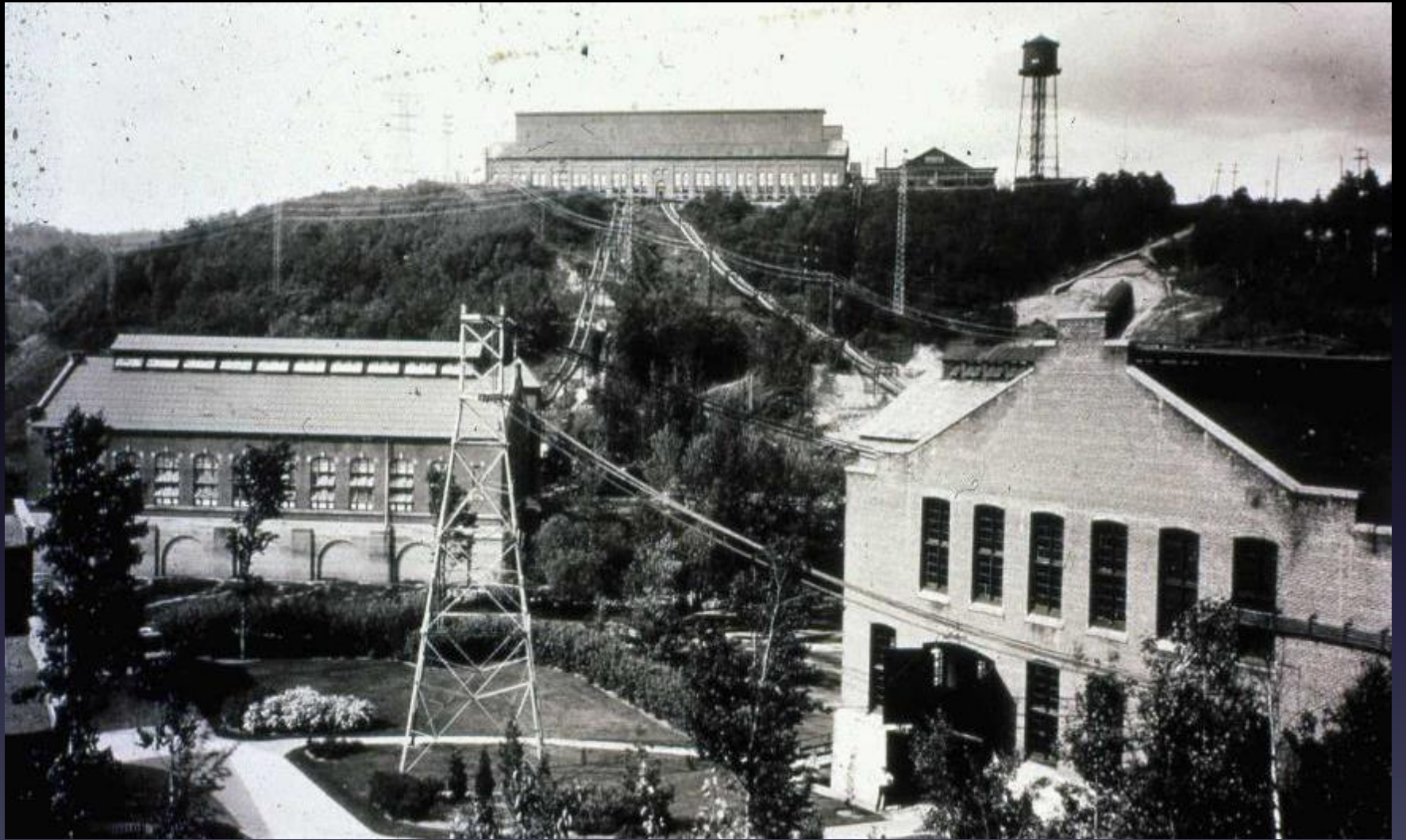






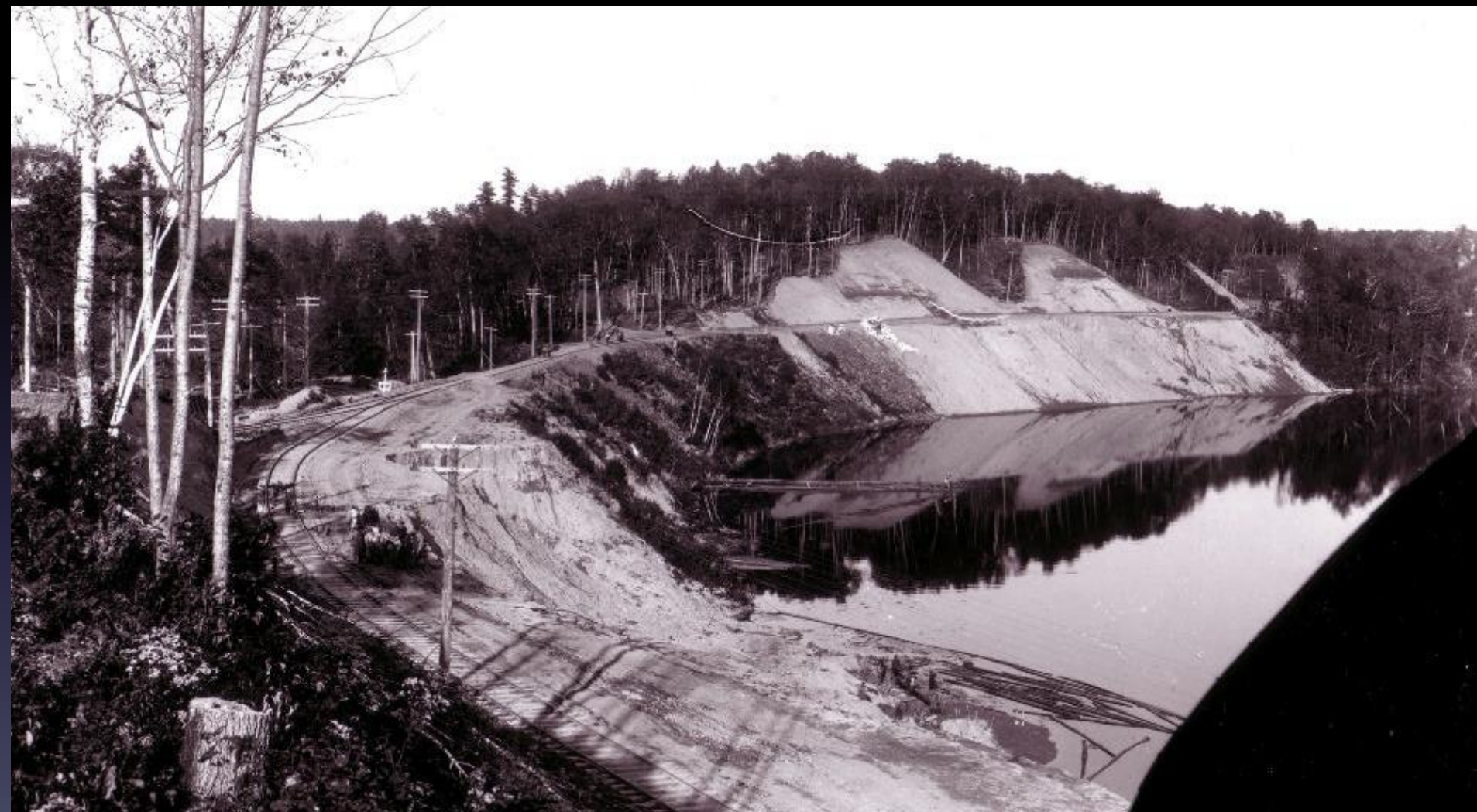




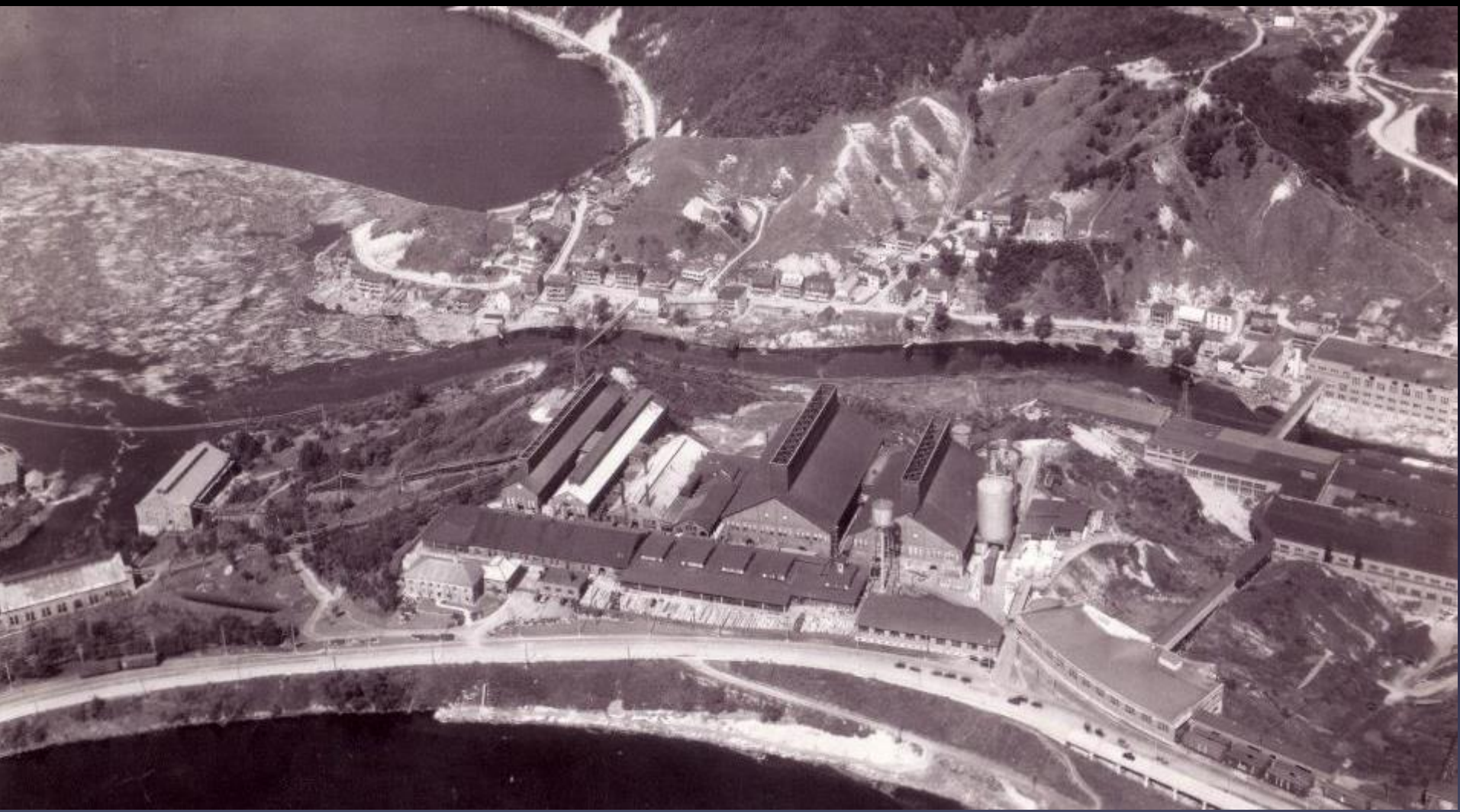










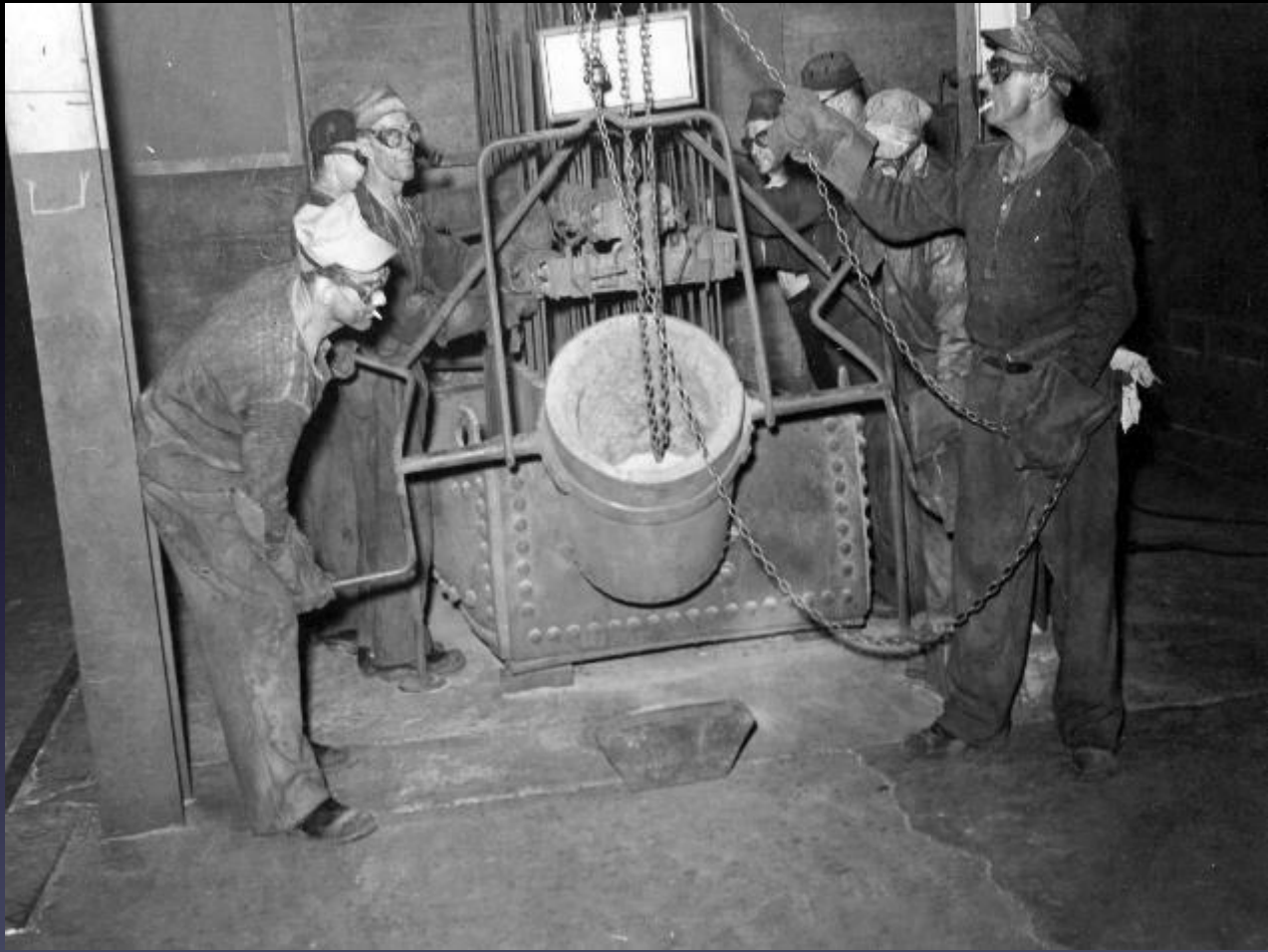


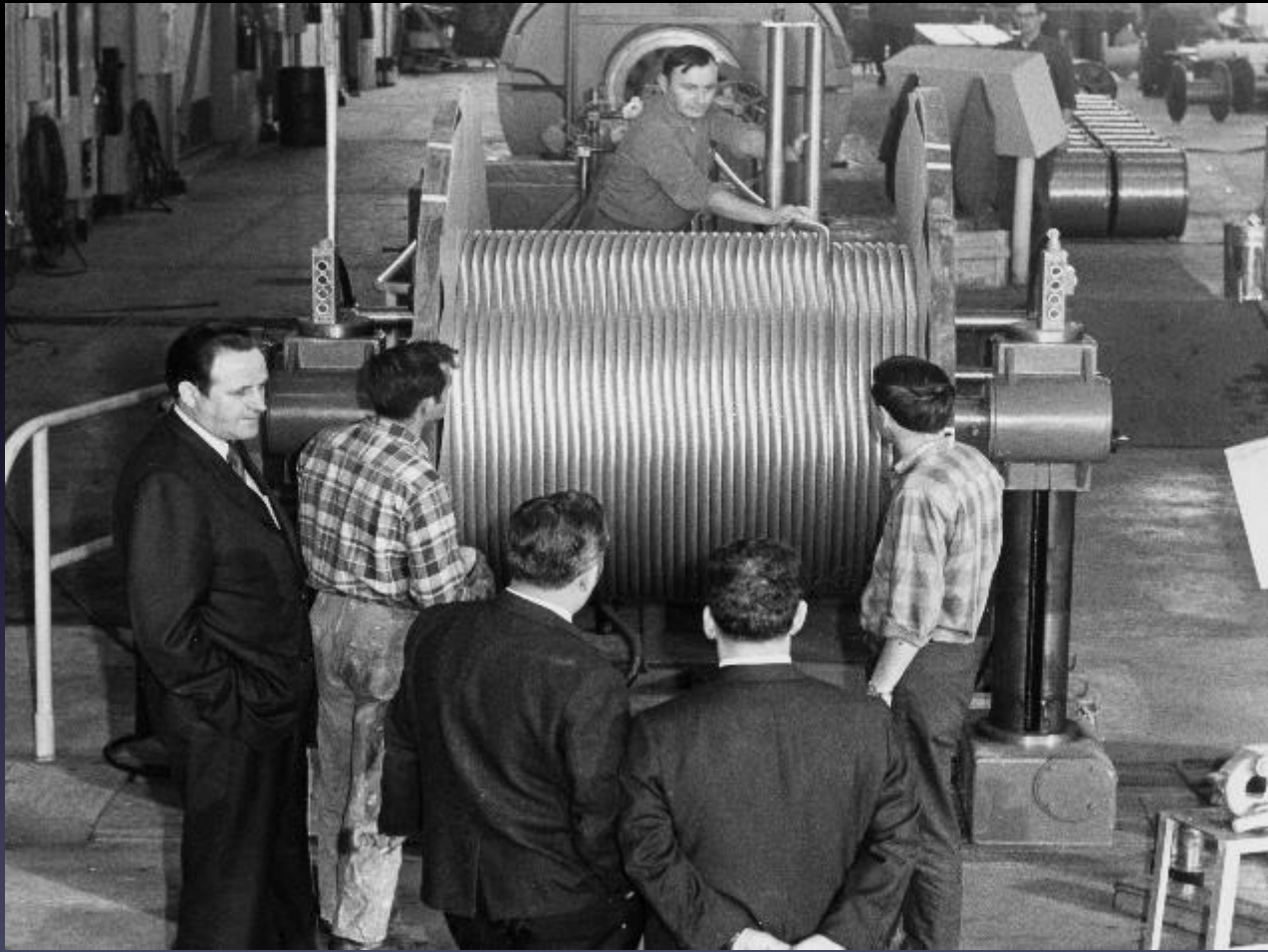


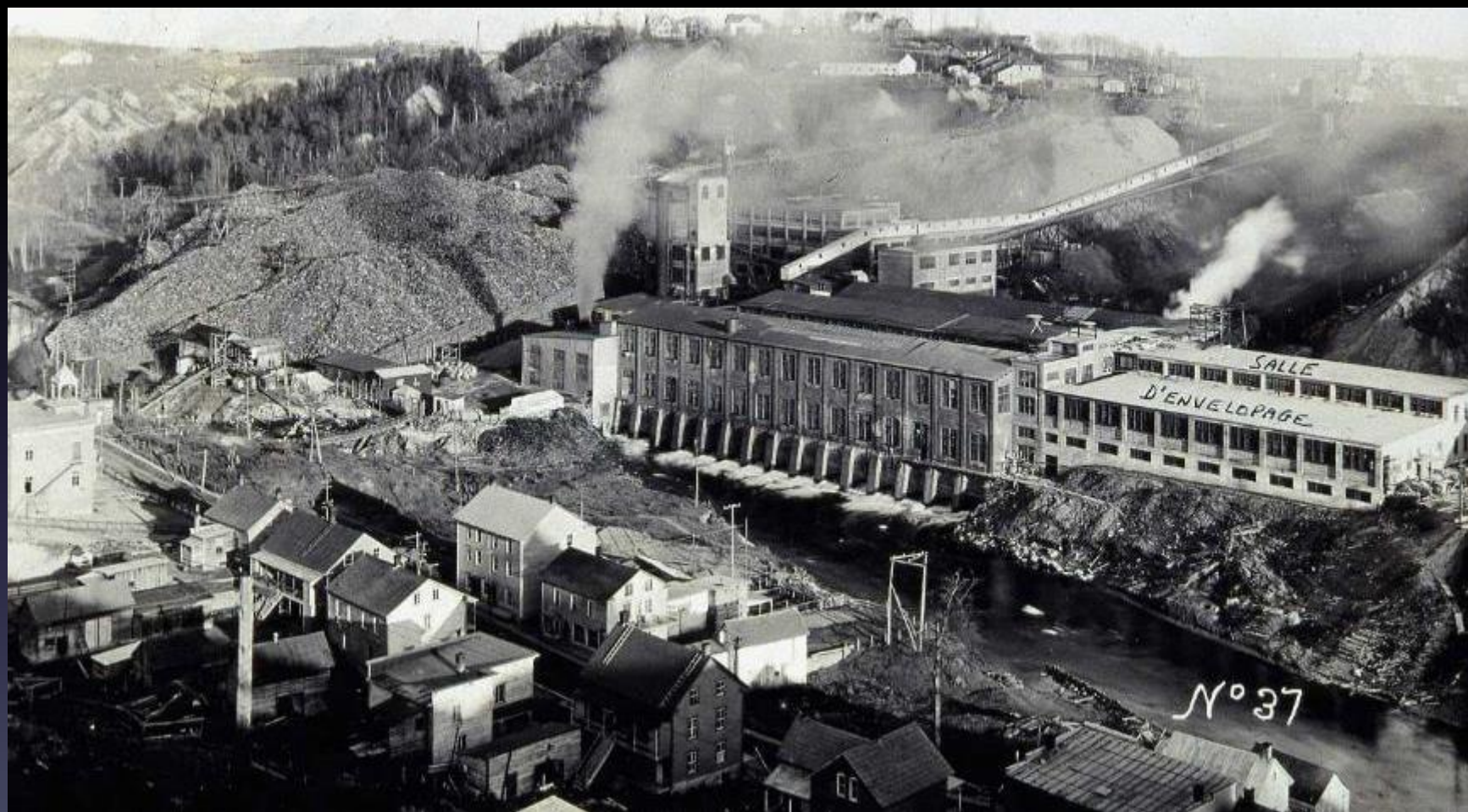
"octobre 1958"



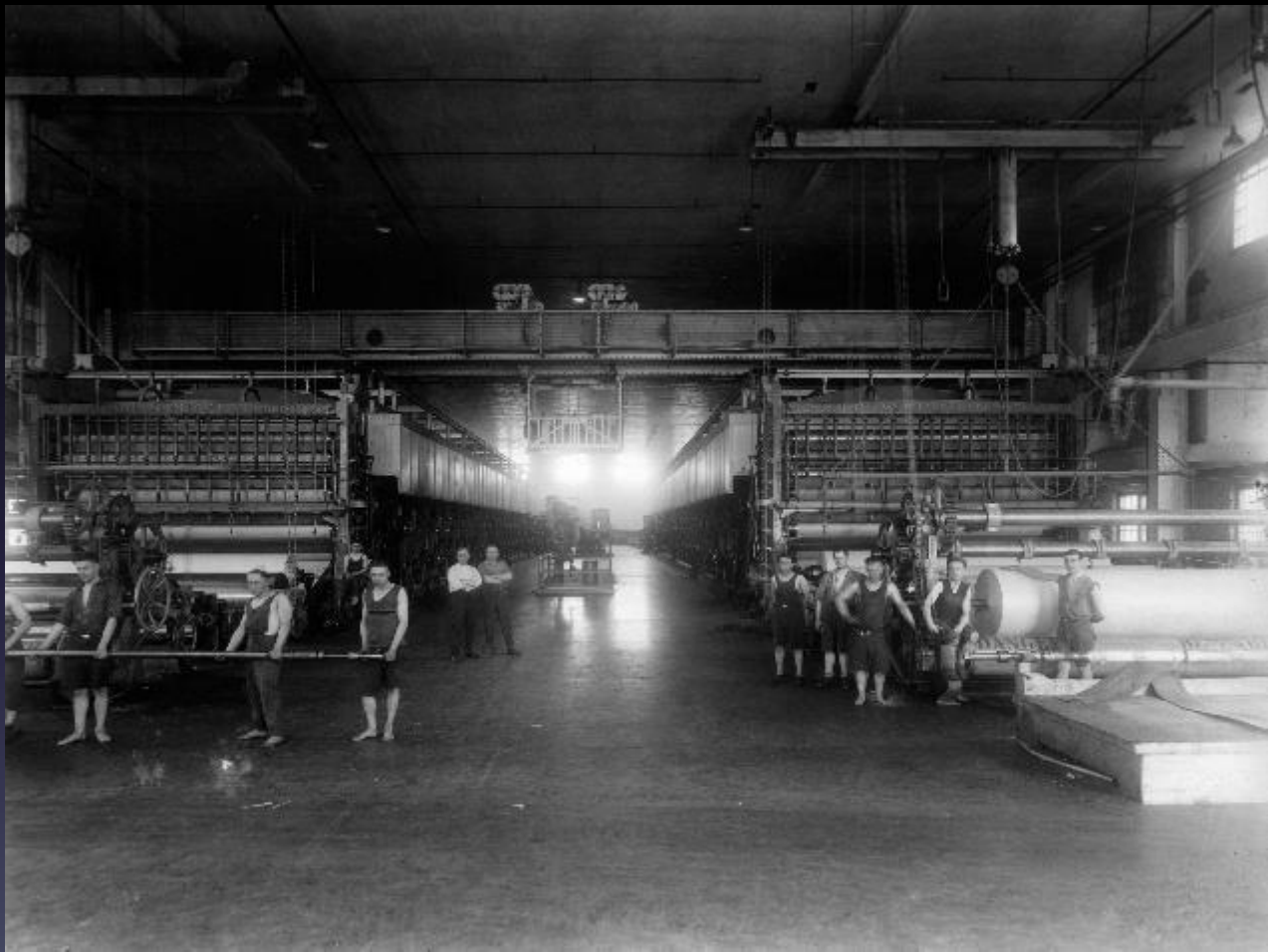












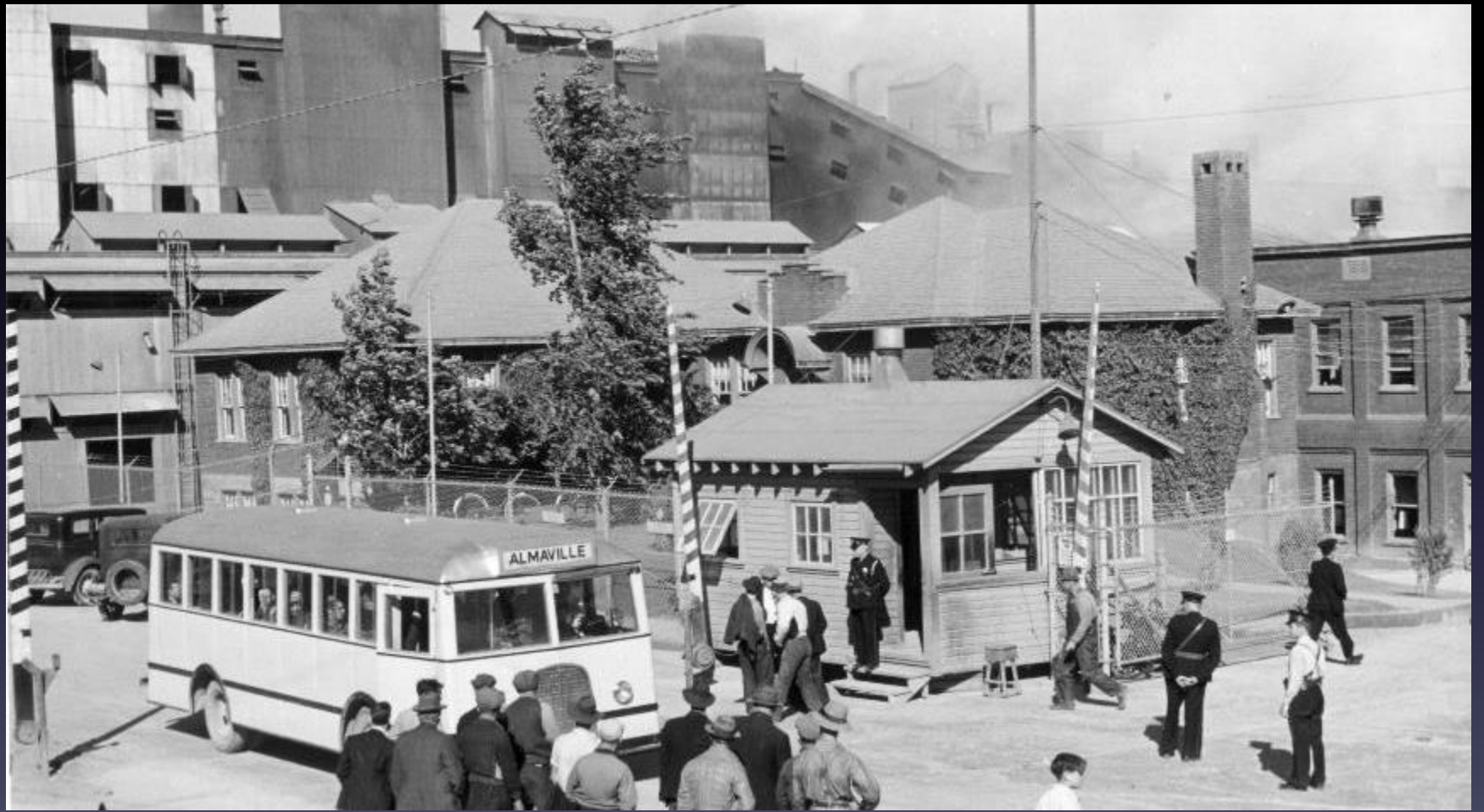




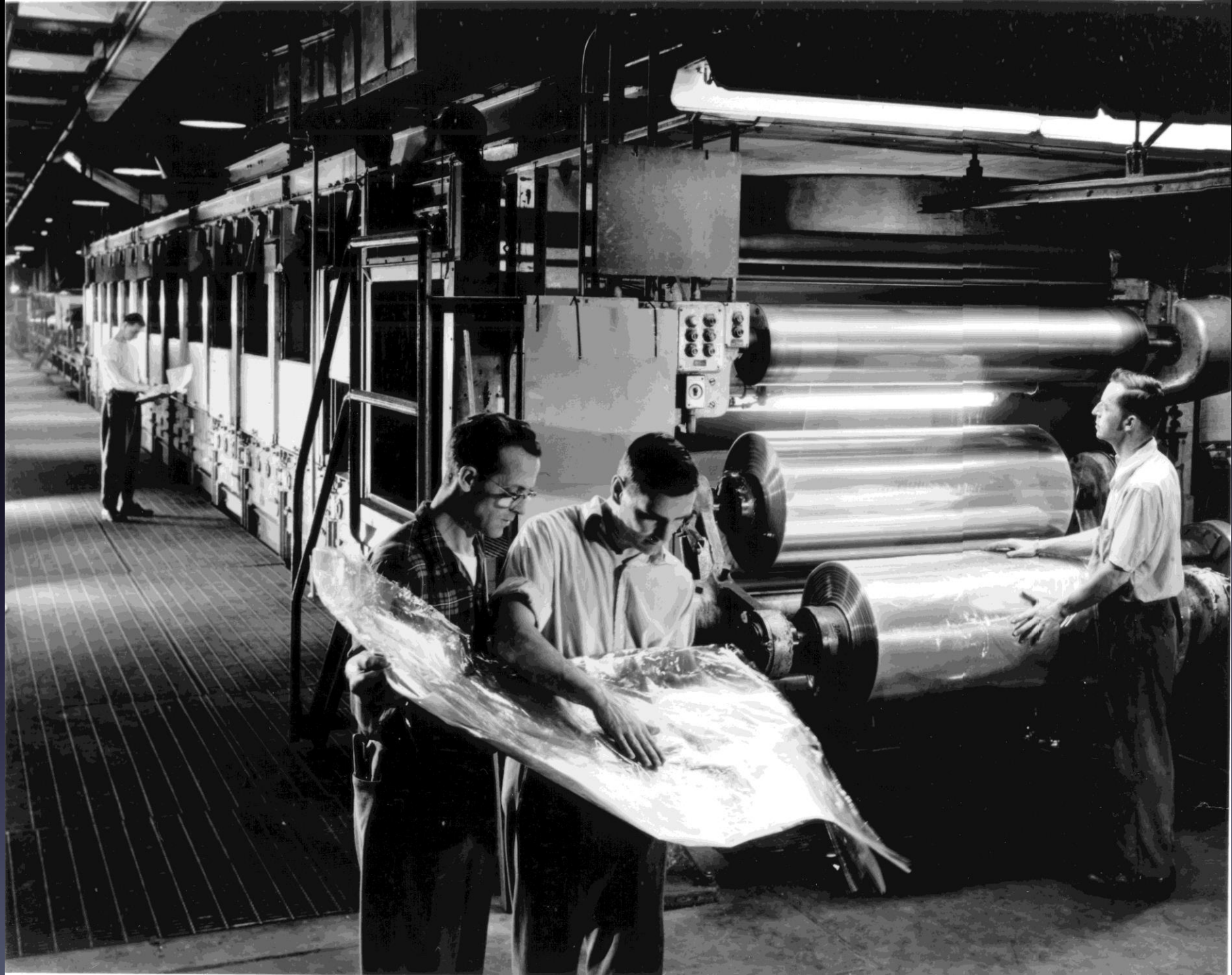
AERIAL SURVEYS CO. (OF CAN.) LTD. GRAND MERE, QUE.



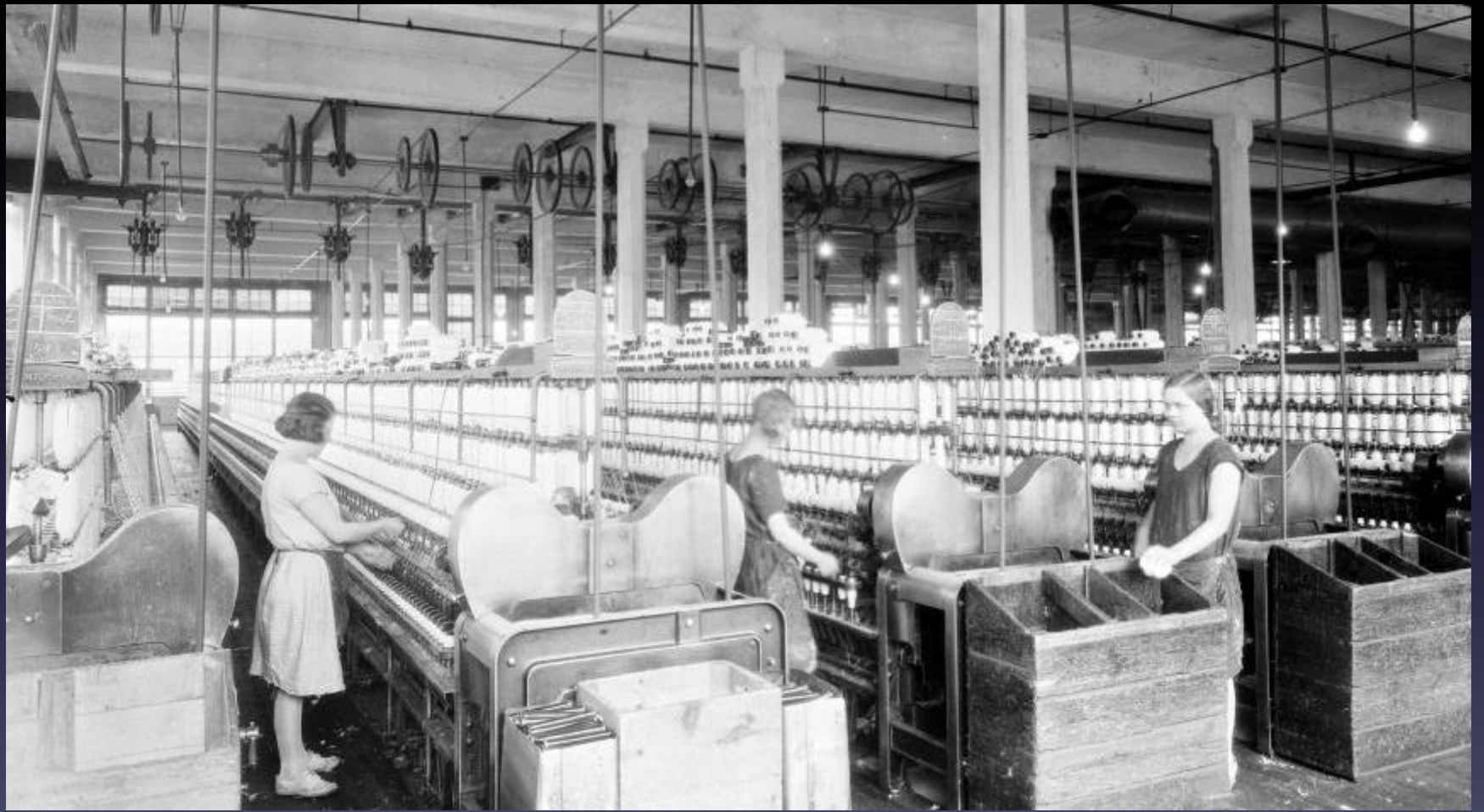














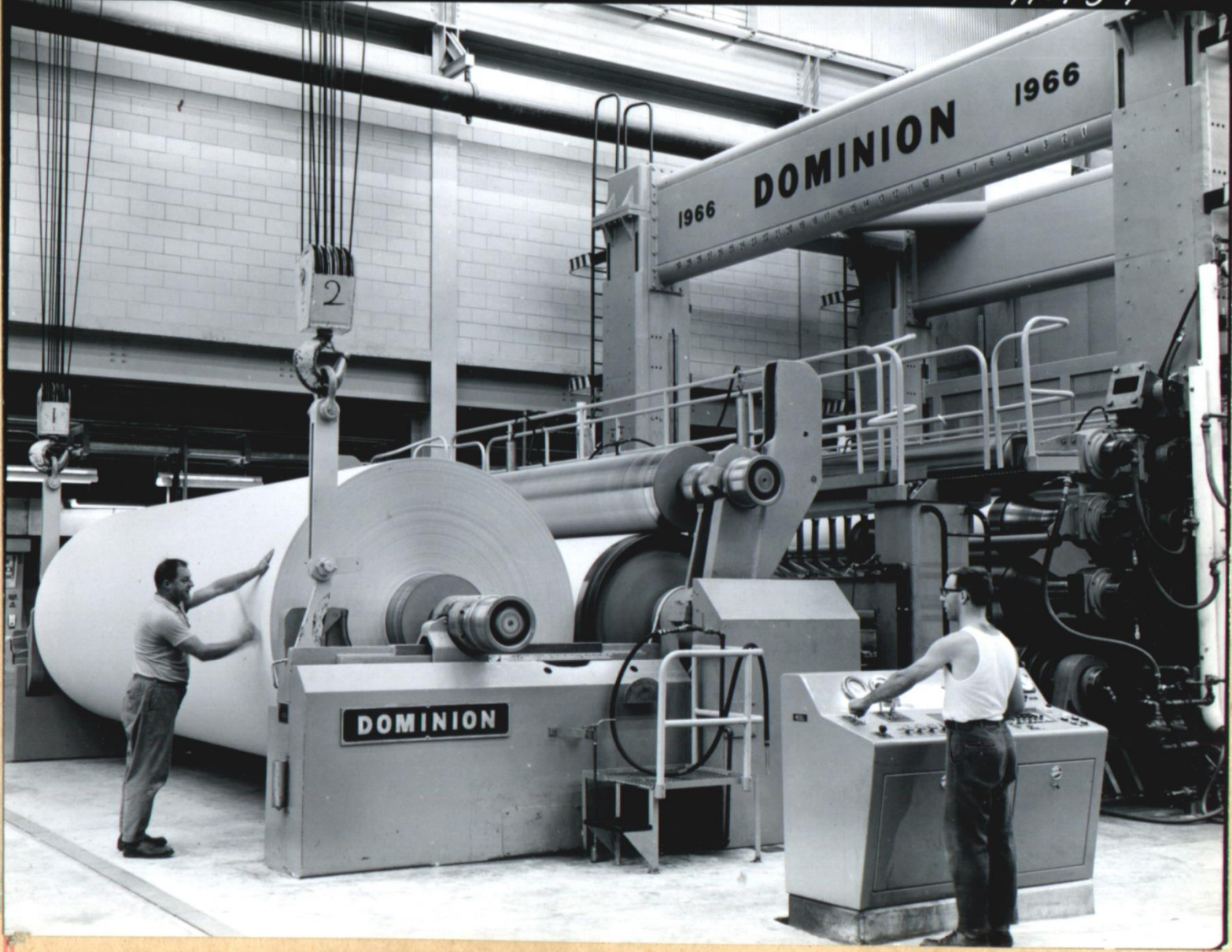
SHAWINIGAN FALLS  
2  
TERMINAL RAILWAY







41459



DOMINION

1966 DOMINION 1966

2

# at SHAWNEE FALLS, IOWA.

Survey of October 1899.  
Scale 1/2" = 100'

Chicago & New England  
1117 Avenue B, New York

Legend

- Contours
- Water
- Buildings
- Streets
- Railroad











30698-14





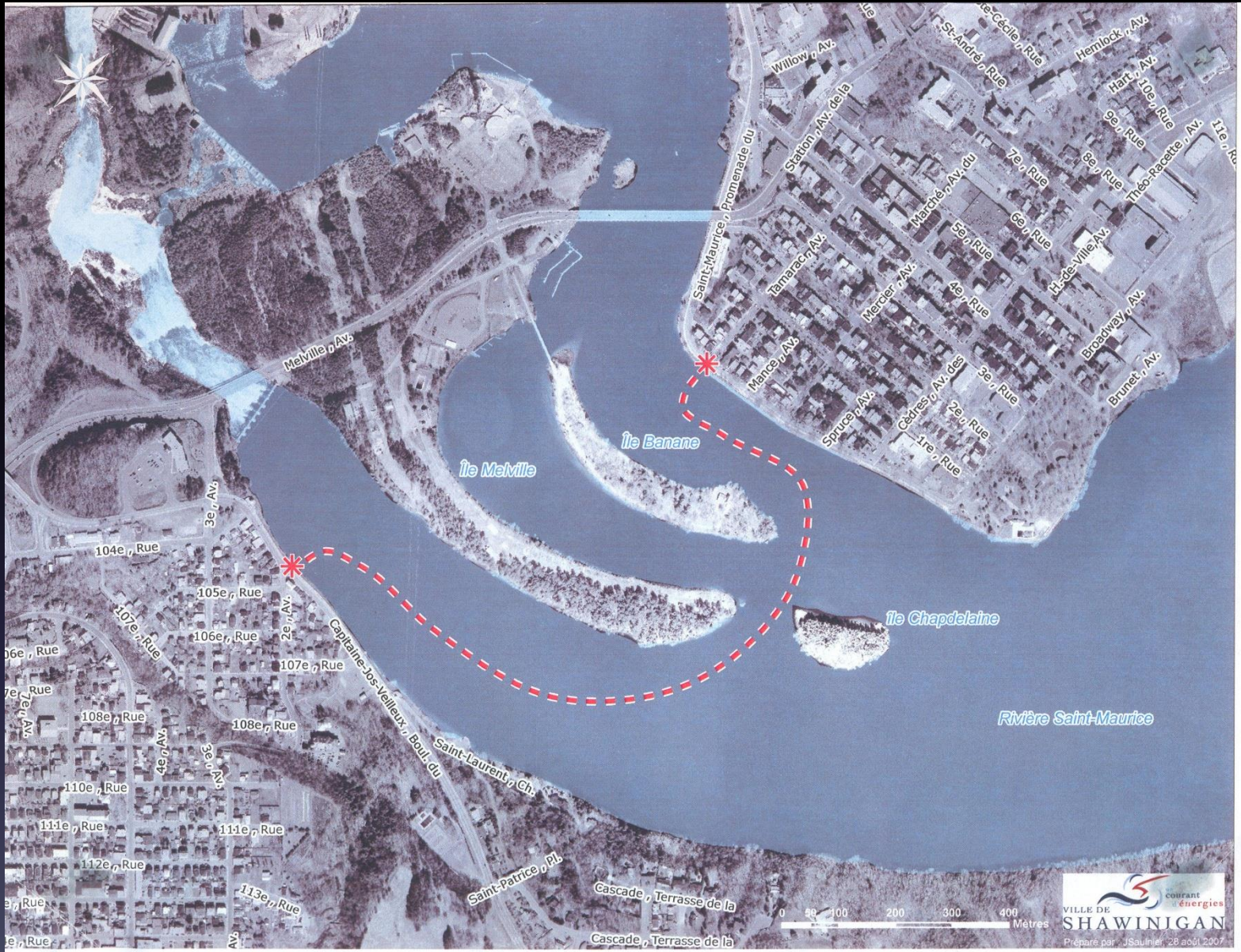


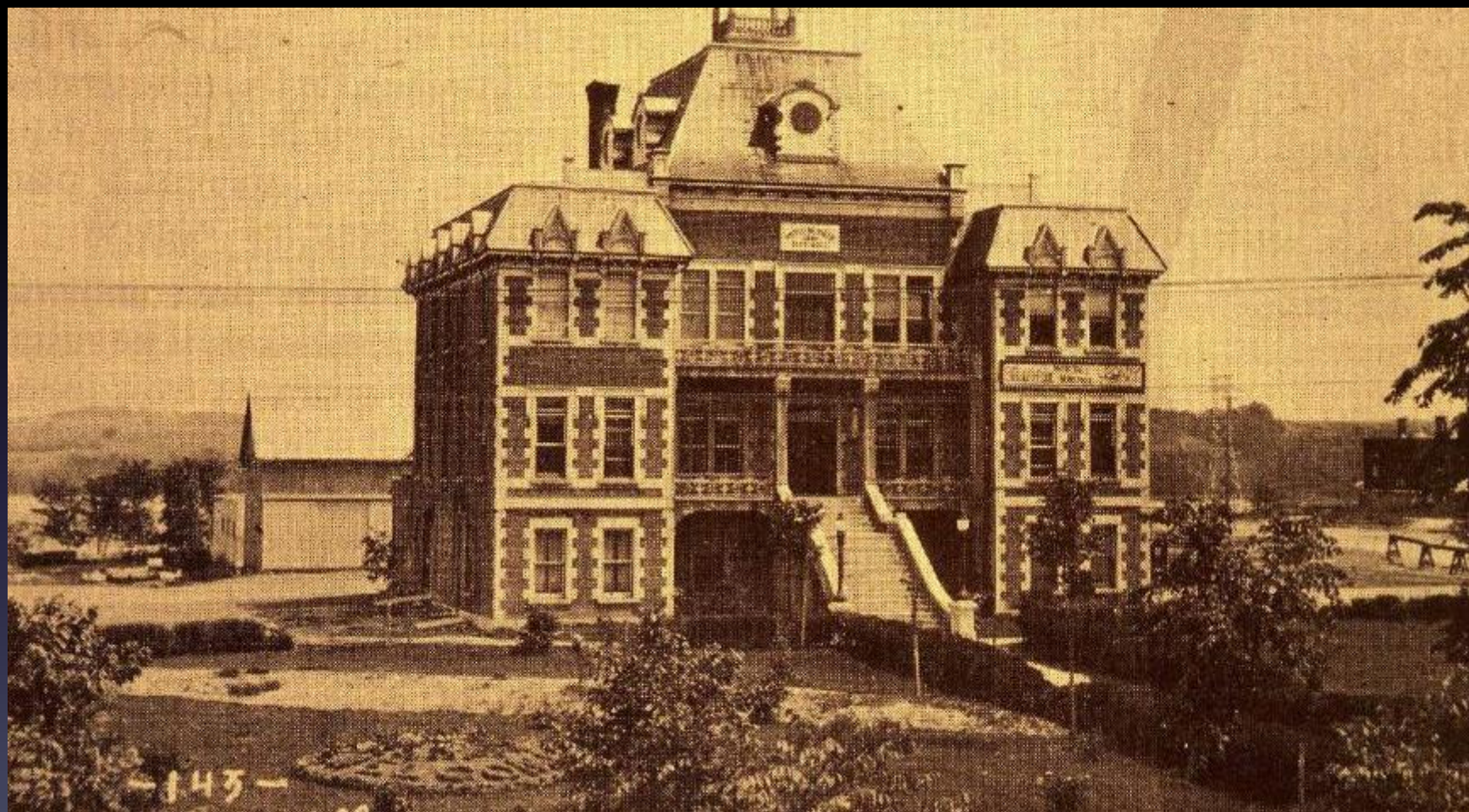






















**QUALITE - SERVICE**

**PATATES FRITES**

**L. BEUPARLANT**

**MERCI**























Merci !

